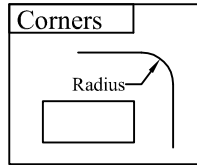


| | | | |
|---------------|--------------|---------------|--------------|
| CUSTOMER: | | SHIP TO: | |
| ADDRESS/CITY: | | ADDRESS/CITY: | |
| PROV: | POSTAL CODE: | PROV: | POSTAL CODE: |
| PH: | FAX: | PH: | FAX: |

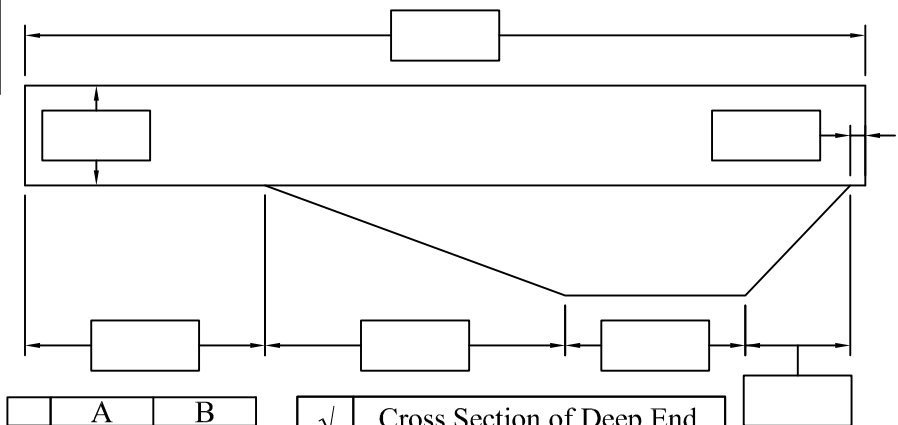
NOTE: FOR INSTRUCTIONS REFER TO "A&B" TRIANGULATION MEASUREMENT SHEET

| | | | | |
|--------------|-------------|-----------------|-------------|-------------|
| Date: | PO# : | Contact: | Contact # : | Contact # : |
| Tag: | | Liner Pattern: | | |
| Wall Height: | Pool Depth: | Pool Perimeter: | | |

Note: (1) It is necessary to "A&B" the start & end of the straight walls. For the radius panels; the start, middle & end of the panels must be "A&B"'d. "A&B" Panel joints on the Roman End. More "A&B's" may be necessary on longer radius panels (Max. of 2' between on "A&B's" on radius panels).
 (2) Be sure to establish the "S" points & Steps, if there are any.
 (3) If the Roman End comes to a point (see P1,P2,P3,P4), be sure to "A&B" These points.

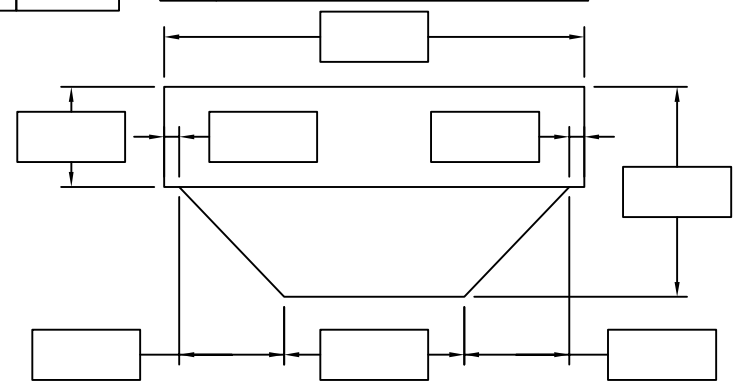


Cross Section of Length

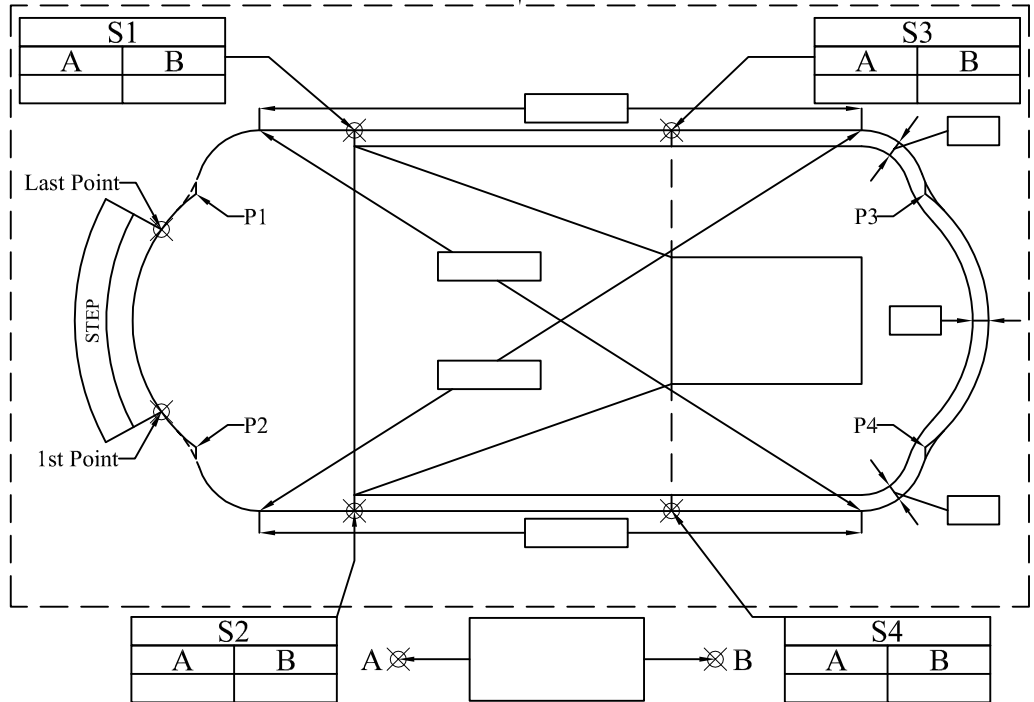


| | A | B |
|----|---|---|
| P1 | | |
| P2 | | |
| P3 | | |
| P4 | | |

| √ | Cross Section of Deep End |
|---|---------------------------|
| | Looking From Shallow End |
| | Looking From Deep End |



Imaginary Box Around Pool
"A&B" Must be outside This Box





18 EASTON RD.
BRANTFORD ON.
N3P1J5 (519) 756 5071

"A - B" TRIANGULATION MEASUREMENT SHEET

Oct 2009

| | | | |
|--------------|------|--------------|------|
| CUSTOMER: | | SHIP TO: | |
| ADDRESS: | | ADDRESS: | |
| CITY/PROV: | | CITY/PROV: | |
| POSTAL CODE: | | POSTAL CODE: | |
| PH: | FAX: | PH: | FAX: |

INSTRUCTIONS

- Position 2 stakes "A & B" a minimum of 10' apart, & a minimum of 3' from the pools edge.
Note: "A&B" must be outside of the imaginary box around the pool. If "A&B" stakes are placed in a different location than that of the diagram sheet, please indicate their location.
- Mark off perimeter of the pool in 2' intervals starting at the steps, if there are any.
Note: It may be necessary to mark off short & reverse radiuses in less than 2' intervals to properly establish them.
- Define break points ("S"1,2,3,4) with measurements from "A&B".
- Use 2 tape measures at the same time, to establish points.
- Fill in all measurement boxes
- All measurements should be taken Horizontally & Vertically.
- All measurements should be rounded off to the nearest 1/4".
- If a specific location is preferred for the wall seam, please indicate it on the diagram, by notation or use a triangulation point.

| | | | |
|-------|-------|----------|---------------|
| Date: | PO# : | Contact: | Contact #(s): |
|-------|-------|----------|---------------|

| | | |
|------|--------|----------------|
| Tag: | Shape: | Liner Pattern: |
|------|--------|----------------|

| | A | B | | A | B | DISTANCE BETWEEN | | | MEASUREMENT | | |
|----|---|---|----|---|---|------------------|---|---|-------------|---|---|
| S1 | | | S3 | | | S1 TO S2 | | | | | |
| S2 | | | S4 | | | S3 TO S4 | | | | | |
| # | A | B | # | A | B | # | A | B | # | A | B |
| 1 | | | 21 | | | 41 | | | 61 | | |
| 2 | | | 22 | | | 42 | | | 62 | | |
| 3 | | | 23 | | | 43 | | | 63 | | |
| 4 | | | 24 | | | 44 | | | 64 | | |
| 5 | | | 25 | | | 45 | | | 65 | | |
| 6 | | | 26 | | | 46 | | | 66 | | |
| 7 | | | 27 | | | 47 | | | 67 | | |
| 8 | | | 28 | | | 48 | | | 68 | | |
| 9 | | | 29 | | | 49 | | | 69 | | |
| 10 | | | 30 | | | 50 | | | 70 | | |
| 11 | | | 31 | | | 51 | | | 71 | | |
| 12 | | | 32 | | | 52 | | | 72 | | |
| 13 | | | 33 | | | 53 | | | 73 | | |
| 14 | | | 34 | | | 54 | | | 74 | | |
| 15 | | | 35 | | | 55 | | | 75 | | |
| 16 | | | 36 | | | 56 | | | 76 | | |
| 17 | | | 37 | | | 57 | | | 77 | | |
| 18 | | | 38 | | | 58 | | | 78 | | |
| 19 | | | 39 | | | 59 | | | 79 | | |
| 20 | | | 40 | | | 60 | | | 80 | | |